

MINS SECS

THE STANZA ENSEMBLE SERIES

133



5 SAXOPHONES & RHYTHM

NINEPINS

JOHN R. BROWN

Solo SAT

(D)

1<sup>st</sup> ALTO

PIANO

1<sup>st</sup> Tenor or 2<sup>nd</sup> Tenor

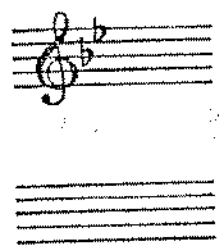
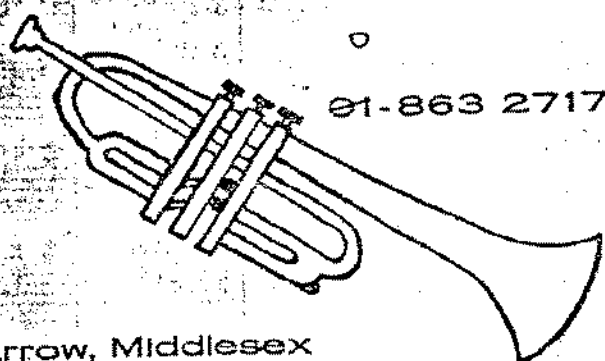
BASS - GUITAR

Scored for:-

- 1st Eb Alto Saxophone
  - 2nd Eb Alto Saxophone
  - 1st Bb Tenor Saxophone
  - 2nd Bb Tenor Saxophone
  - Eb Baritone Saxophone
  - Piano + GUITAR
  - BASS
  - Drums
- With FULL CONCERT SCORE

Price £1.00

01-863 2717



STANZA MUSIC  
11 Victor Road, Harrow, Middlesex

Handwritten musical score for vocal and instrumental ensemble. The score includes parts for:

- ALTO 1<sup>o</sup>
- ALTO 2<sup>o</sup>
- TENOR 1<sup>o</sup>
- TENOR 2<sup>o</sup>
- BARITONE
- PIANO
- BASS
- DRUMS

Dynamic markings include *ff* (fortissimo) and *mezzo*. The drum part includes the instruction "one ENS Phrasing" and "Solo".

(B) (A)

Handwritten musical score for guitar and bass. The score includes:

- Guitar part with various chord voicings and melodic lines.
- Bass part with a steady accompaniment.
- Chord chart for guitar:  $Bb7$ ,  $Eb7$ ,  $A7sus7$ ,  $F7$ ,  $Bb7$ ,  $Bbm7$ ,  $Eb7$ ,  $A7$ ,  $Dmaj7$ ,  $D7$ .
- Section marker: "PLAY 16"

Handwritten musical score for guitar and bass. The score includes:

- Guitar part with various chord voicings and melodic lines.
- Bass part with a steady accompaniment.
- Chord chart for guitar:  $Gm7$ ,  $C7$ ,  $F$ ,  $D7$ ,  $Gm7$ ,  $F\#7$ ,  $C7$ ,  $Fmaj7$ ,  $B9b$ .

BARS

Handwritten musical notation for the first system. It consists of five staves. The top staff contains a melodic line with notes and rests. The second staff has a treble clef and notes. The third staff has a treble clef and notes. The fourth staff has a bass clef and notes, with a circled 'A' above it. The fifth staff has a bass clef and notes, with a circled 'B' above it. Chords are indicated by letters like 'B7' and '(9)'.

Handwritten musical notation for the second system. It consists of five staves. The top staff contains a melodic line. The second staff has a treble clef and notes. The third staff has a treble clef and notes. The fourth staff has a bass clef and notes. The fifth staff is a guitar chord chart with the following chords: Bbm7, Eb7, Abmaj7, F7, Bbm7, Eb7, A7, Dmaj7, D7. Below the chord chart is a wavy line labeled 'PLAY 16'.

Handwritten musical notation for the third system. It consists of five staves. The top staff contains a melodic line. The second staff has a treble clef and notes. The third staff has a treble clef and notes. The fourth staff has a bass clef and notes. The fifth staff is a guitar chord chart with the following chords: Gm7 (9), Gm7, C7, F, D7, Gm7, C7, F, F7, B7. Below the chord chart is a wavy line labeled 'PLAY 16'.

